



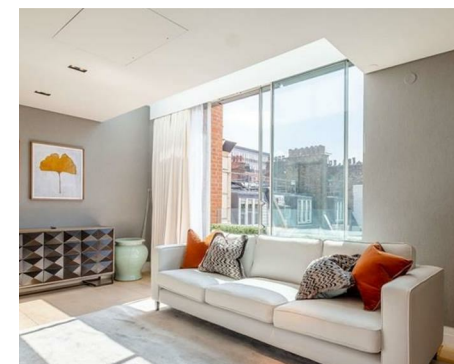
Let **UK** Home

2 Bedrooms

Flat

Located in London

£17,333 Per Month



info@letukhome.co.uk

<https://www.letukhome.co.uk/>

01795 358 886



62 Green Street London

W1K 6RQ



Let UK Home are pleased to offer this spacious 2-bedroom apartment located at Green Street, Mayfair, London W1K.

This magnificent Manhattan loft style, north east facing, two bedroom apartment is situated within a prime and exclusive address in Mayfair.

This fabulous apartment is set over 1,680 sq ft and arranged over three floors of entertaining and living space. The apartment comprises;

Third floor

Two double bedrooms with a dressing room area both benefiting from en suite bathrooms. The master bedroom benefits from a private terrace.

Fourth floor:

A spacious modern fitted kitchen/diner with Gatineau appliances, guest cloakroom, spacious reception room with a private terrace.

Fifth floor:

This sky light mezzanine level can be used as an office or guest bedroom with an en-suite bathroom. There is access via Bi fold doors onto a private roof terrace with stunning views over central London.

The contemporary style is spectacular: featuring glass panelling in the hallway and a modern open staircase with contemporary glass balustrade which allows for an abundance of natural light to enter the apartment.

Further benefits include an internal lift service to each floor of the apartment, a

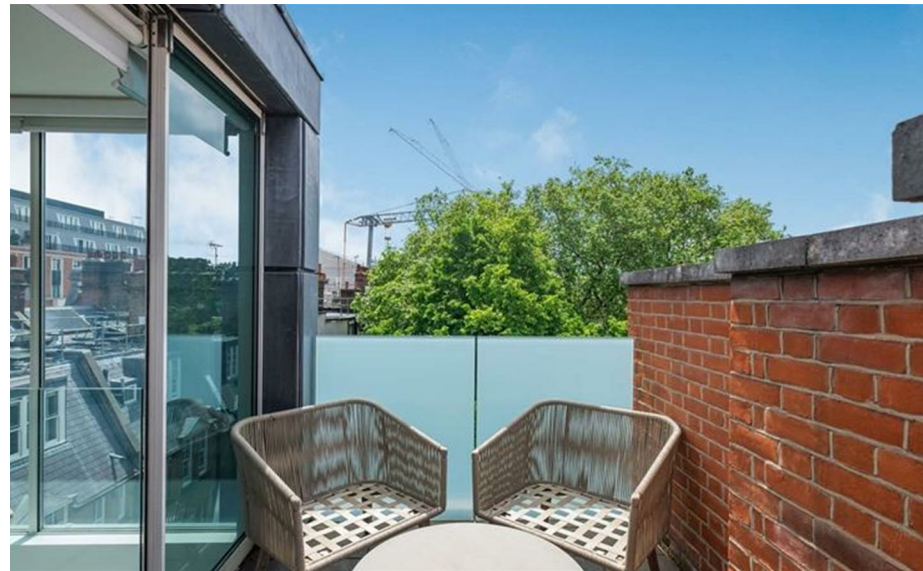
62 Green Street London

£17,333 Per Month



- 3rd Floor
- Pet friendly
- Superfast broadband
- 2 balconies and 1 sky terrace
- Video Entry

- Newly refurbished apartment including new modern furniture
- Lift Service
- Over 3 floors
- Available furnished or unfurnished
- EPC Rating: C





Let **UK** Home

3F 2 Eastbourne Terrace
Paddington
London
W2 6LG

01795 358 886

info@letukhome.co.uk



Council Tax Band:

Local Authority:

Agents Note: Whilst every care has been taken to prepare these particulars, they are for guidance purposes only. All measurements are approximate and are for general guidance purposes only and whilst every care has been taken to ensure their accuracy, they should not be relied upon and potential buyers/tenants are advised to recheck the measurements.

Energy Efficiency Rating		Current	Potential
Very energy efficient - lower running costs			
(92 plus) A			
(81-91) B			
(69-80) C		78	80
(55-68) D			
(39-54) E			
(21-38) F			
(1-20) G			
Not energy efficient - higher running costs			
England & Wales		EU Directive 2002/91/EC	

<https://www.letukhome.co.uk/>